



NFHS Soccer

Dual System Mechanics

August, 2010/11

San Gabriel Valley Soccer Referees Association

Objectives

Identify responsibilities of dual system officials

Perform basic mechanics in prescribed manner

Describe general patterns of movement

Describe major set positions used

Identify responsibilities of Lead/Trail officials

Authority and Procedures

2010-11 NFHS Soccer Rules

Dual-Officiating System, p.83

Head Referee

Conducts pre-game conference(s)
and instructions

Make decisions on points not
covered by Rules

Match authority on rules
interpretation, equipment legality

Who's the Head Referee?

Planned dual will be designated

Unplanned dual? Higher ranking

Referee Team Pre-game

Inspect field/players together

Determine lead/trail directions (left or rt.)

Decide touchline/goal line responsibilities

Review proper mechanics/techniques

Emphasize eye contact; consult if needed

Simultaneous whistle – defer to head ref

Coordination Issues

- Substitutions

- Injuries

- Restarts

Pre-game with Coaches

Don't "apologize" for doing a dual

Don't suggest match will be called differently or that team's need to adjust for dual

DO explain procedure if 3rd shows

DO address subs "check-in"

Do stress officials have equal authority on foul calls

Making the Call I

Responsibility for Restart Whistle



Trail whistles start

Kickoff(s)
Drop Ball ?
Goal Kick
Throw In (Trail side)

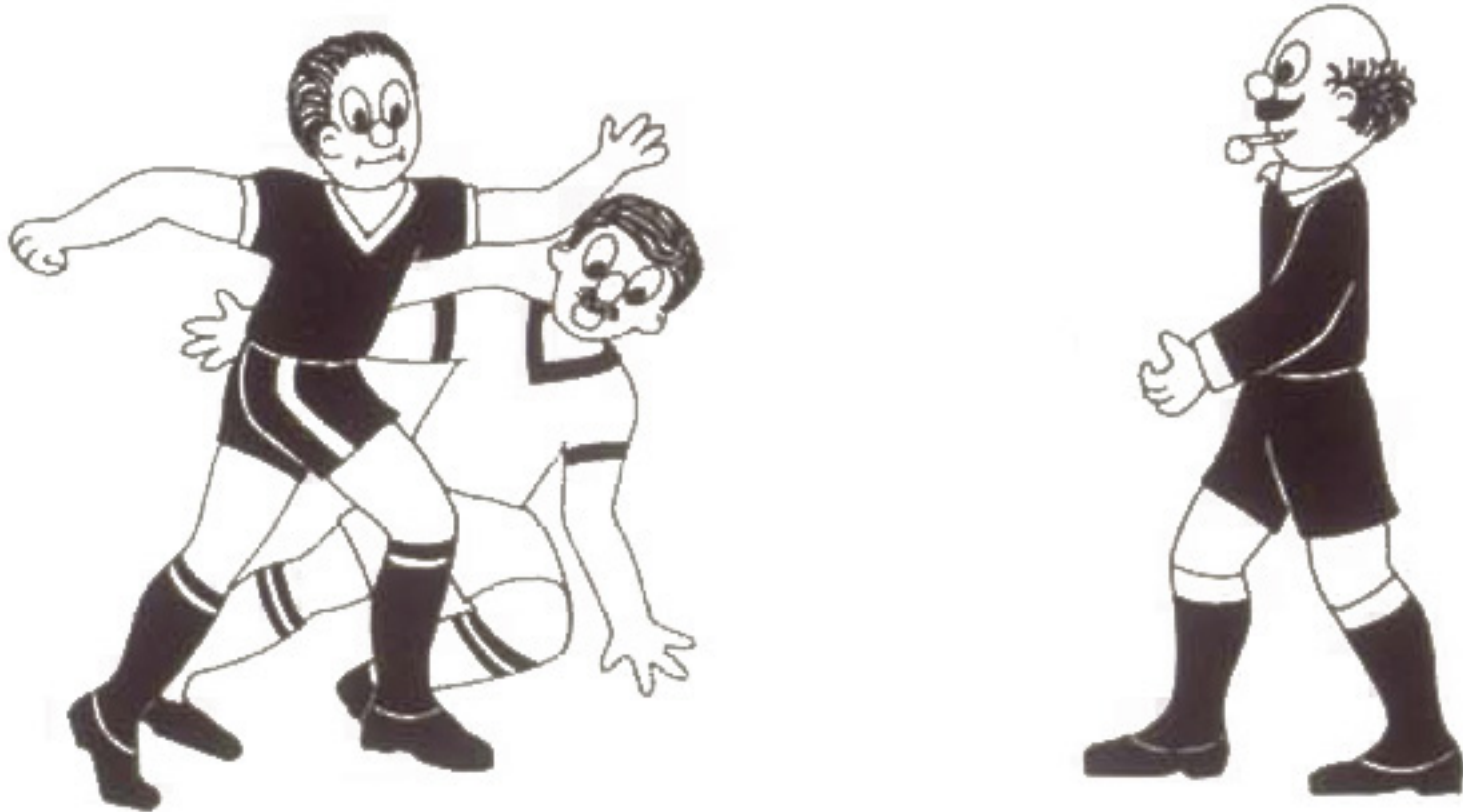


Lead whistles start

Corner kick
Penalty kick
Free kick
Throw In (Lead side)

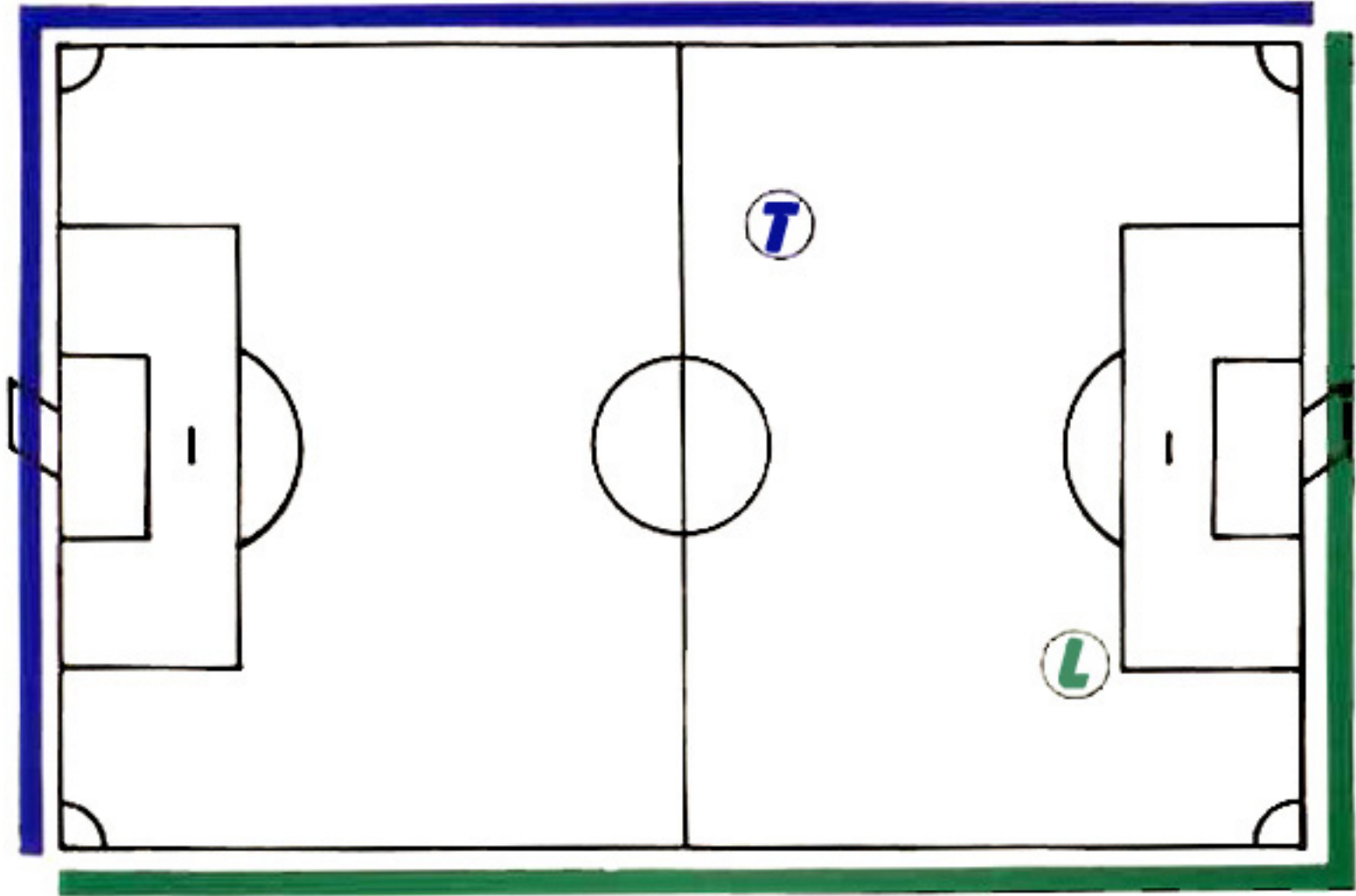
Subs – official responsible for restart whistles

Making the Call - Eye Contact Essential



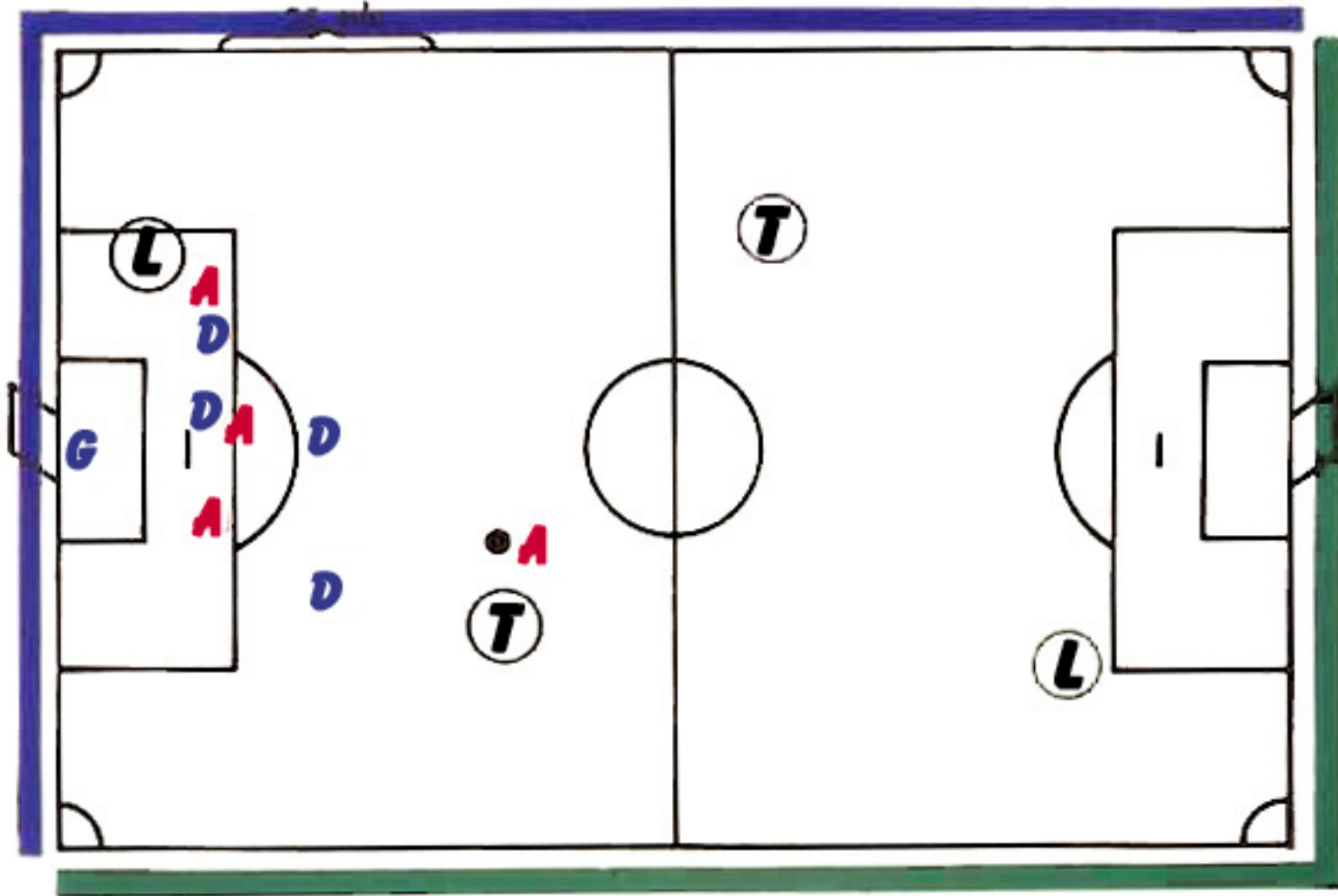
Referee who **SEES** the violation, whistles

Dual System of Control



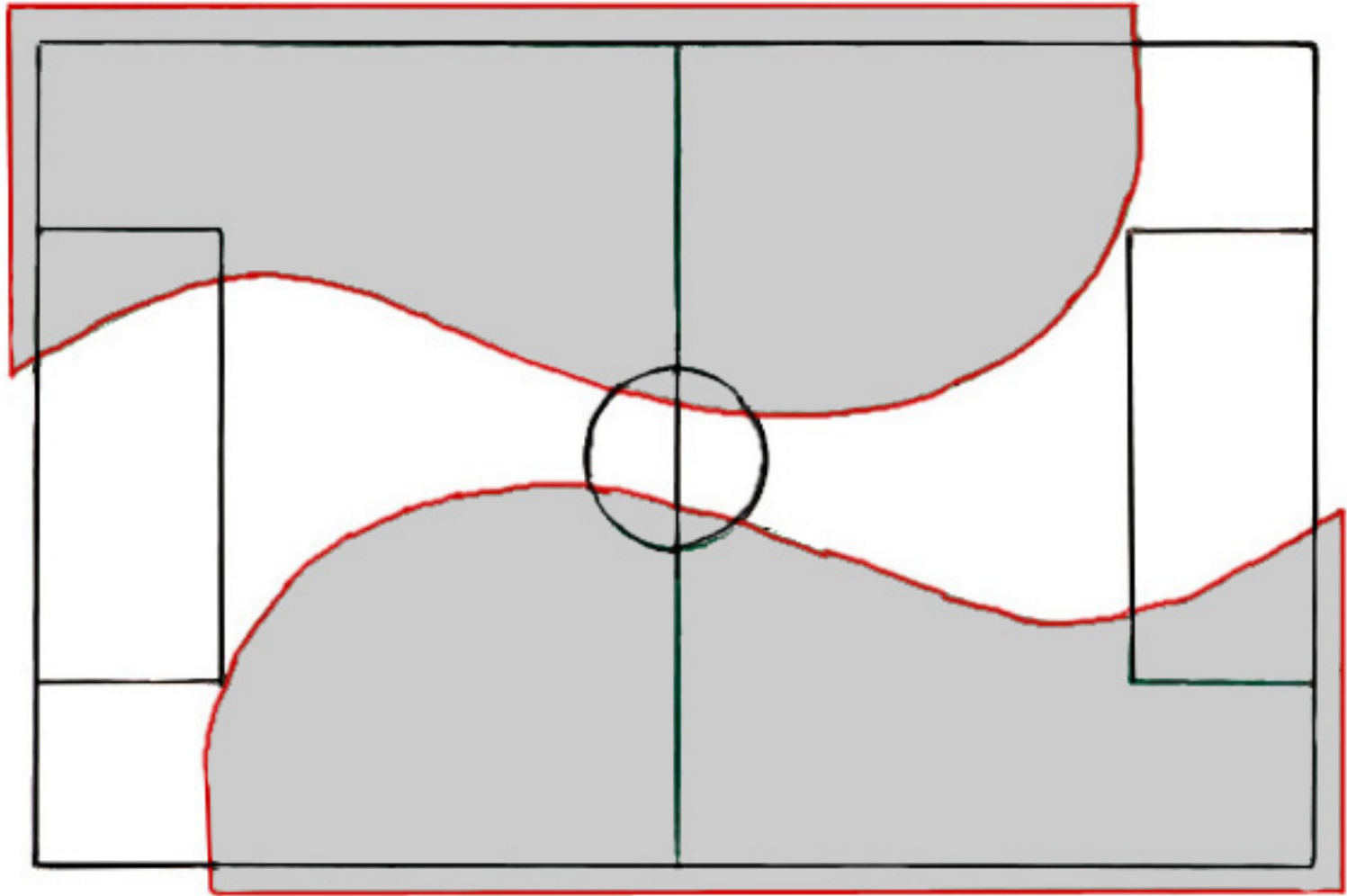
Out of bounds responsibility

Keep play in between on the 30-40 yard rope



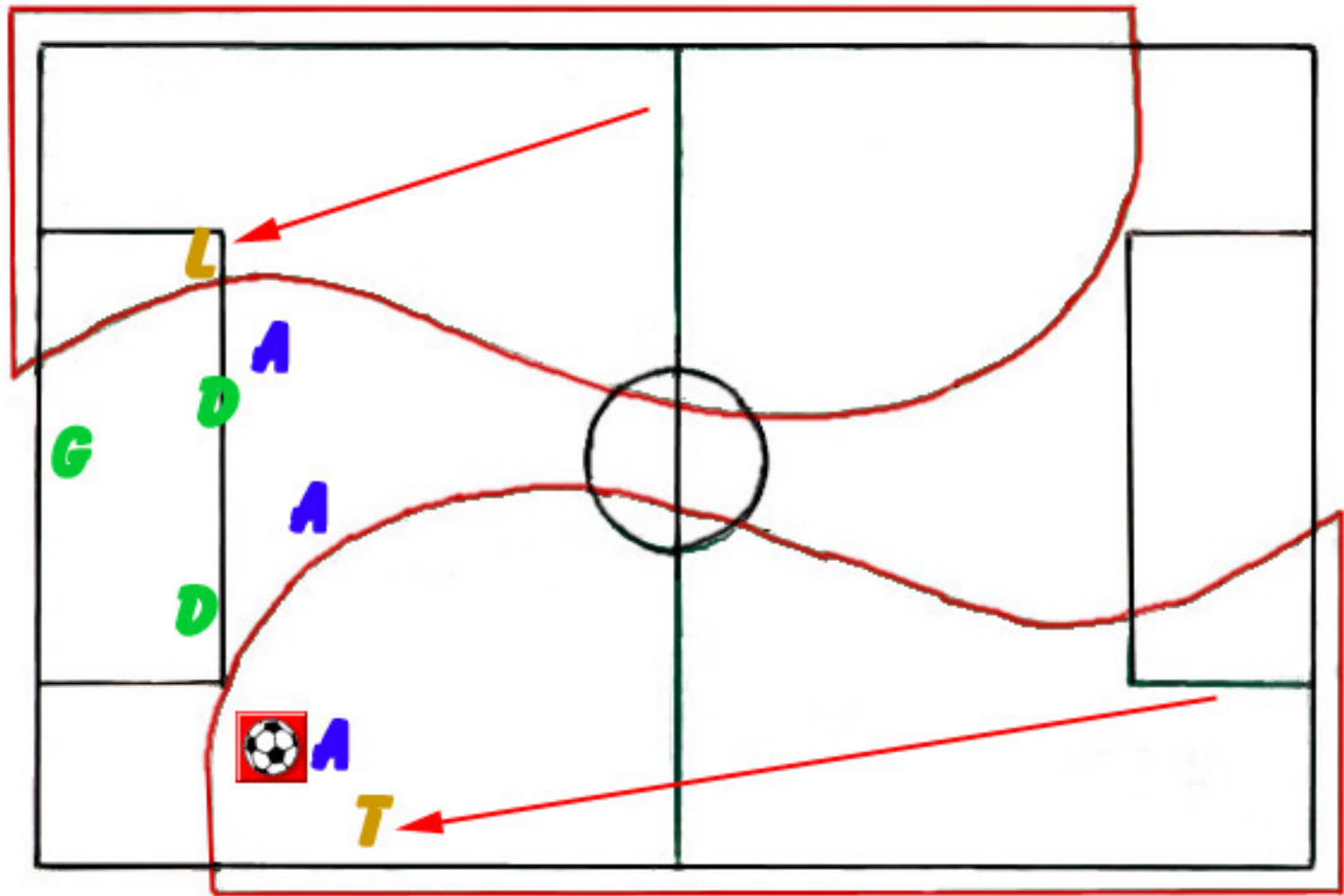
Adjust to flow – Lead Official keys on Lead Attacker

No Touchline Hugging



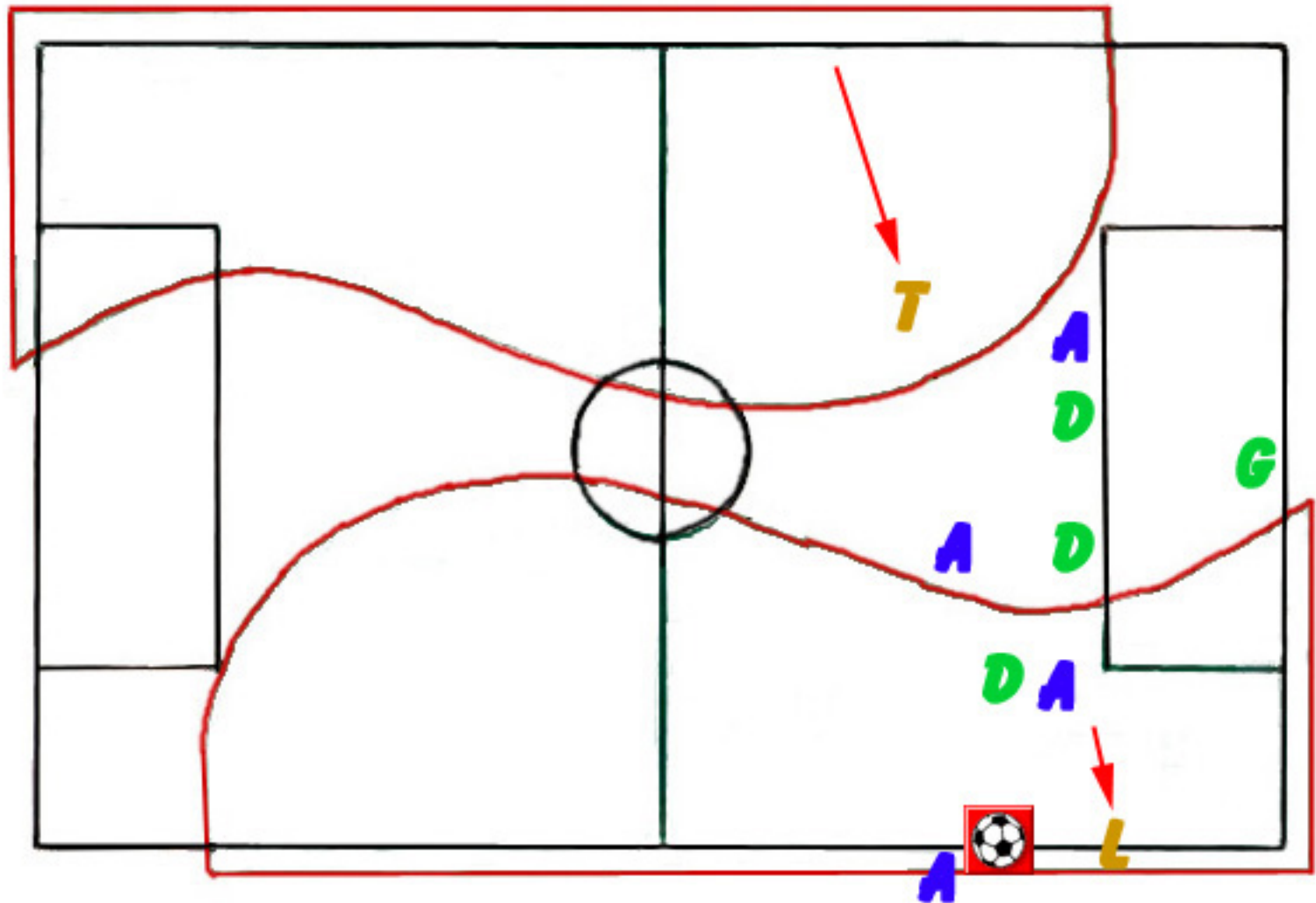
Flexible Pattern – requires high work rate to stay close enough to play and still be able to cover the offside decision

Covering “coffin corner”



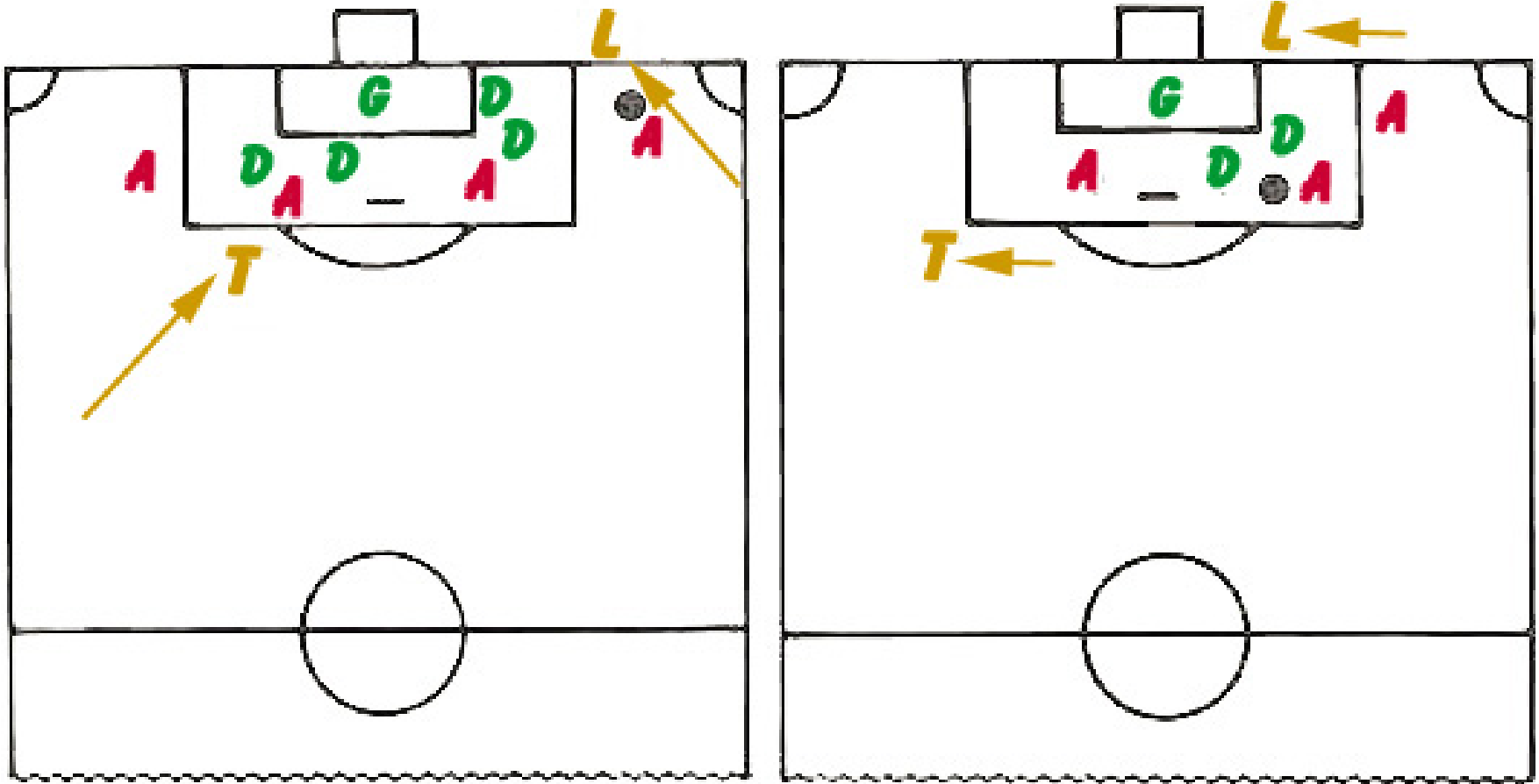
Trail must press down with play. Lead is usually screened and must split his focus to determine offside.

Running off the field may be required



Just like diagonal system? Lead referee should be closer to the goal than the thrower, in order to cover goal scored as well as offside.

Play near the goal



Lead referee across the goal may be necessary, but may also compromise the offside decision.

Set Positions

Start of Play

During play

Free kick

Corner kick

Goalkeeper clearances

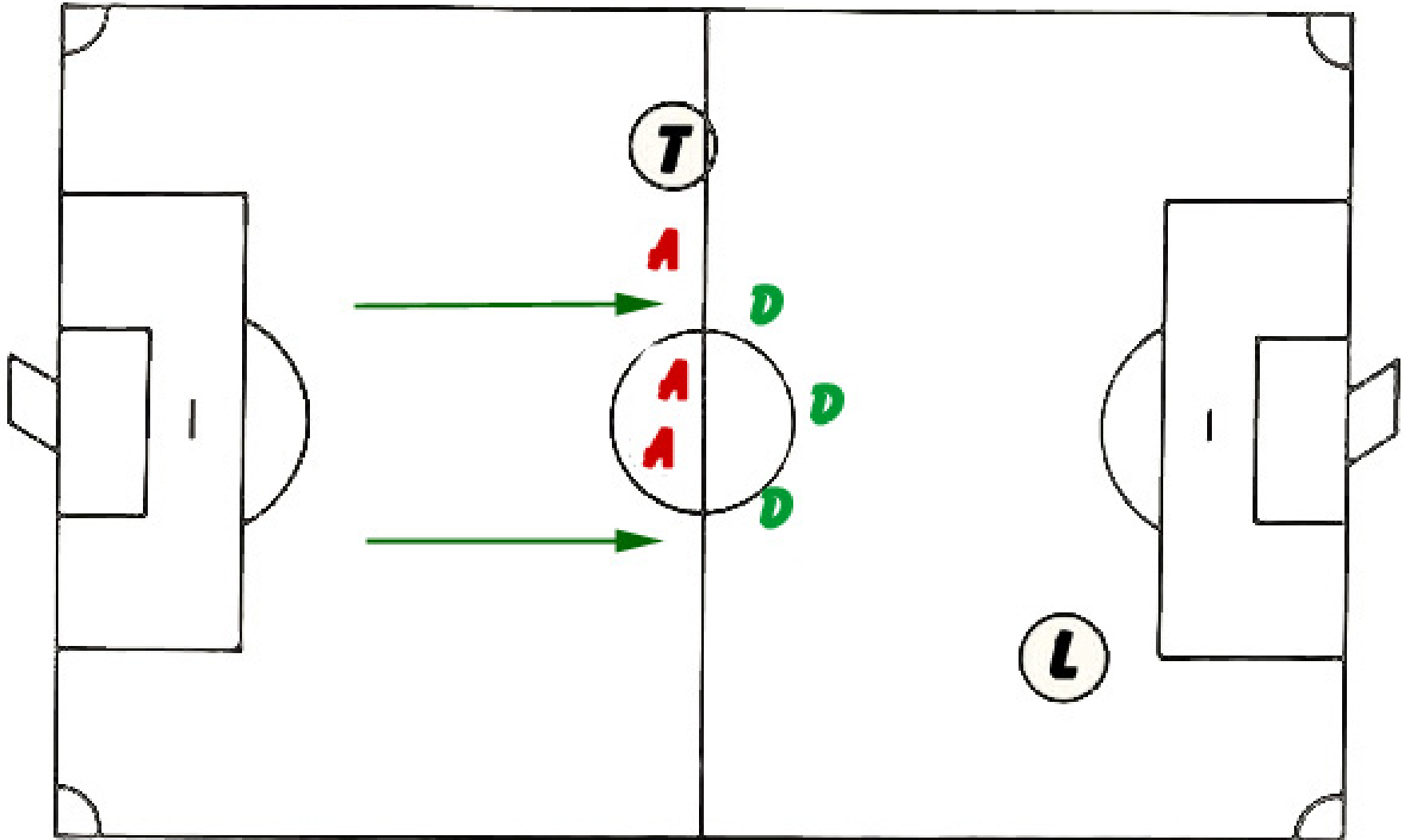
Goal kick

Penalty kick

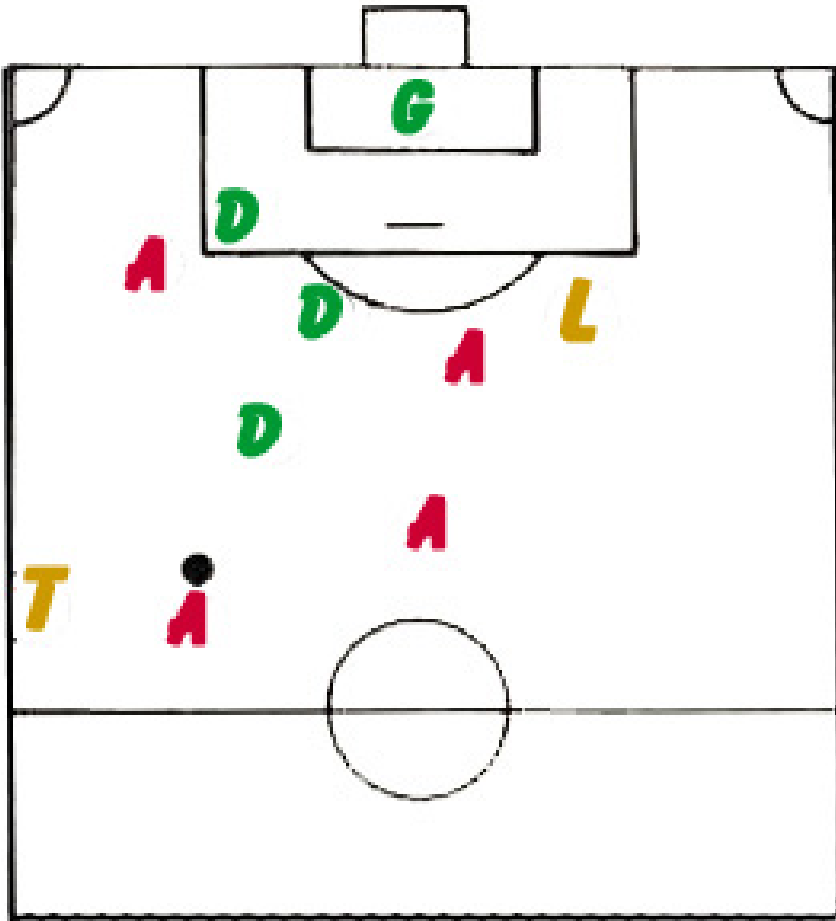
Throw in

Drop ball

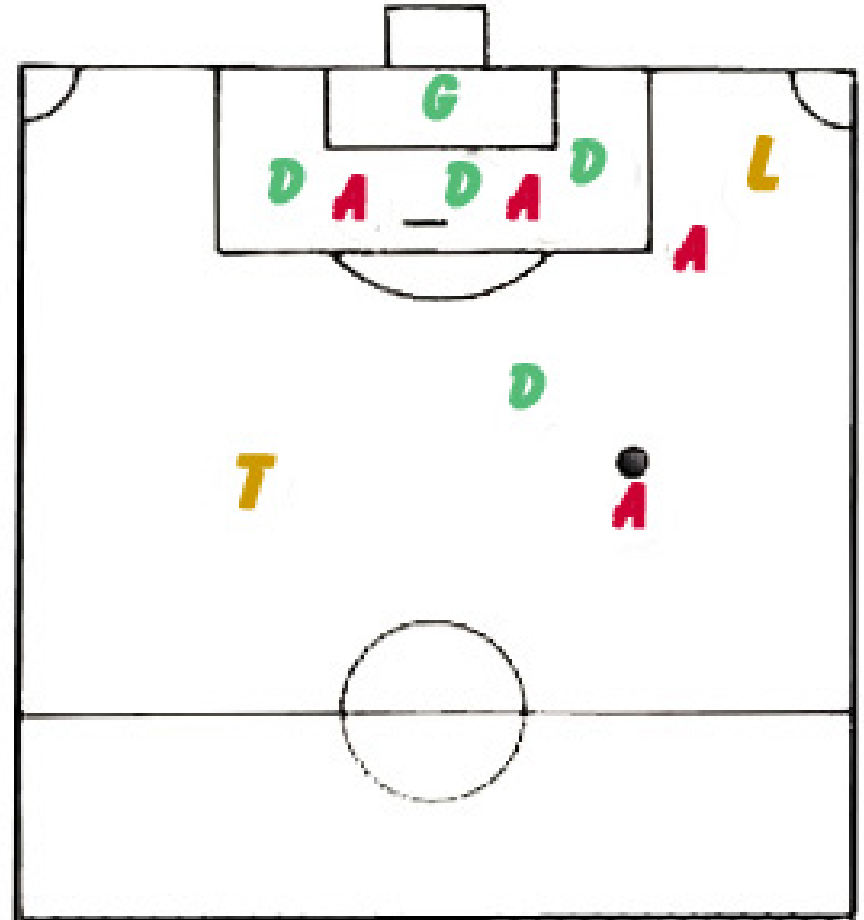
Start of Play



During Play



Free Kick



Free Kick in Attacking Half

Trail referee:

Moves even with ball

Covers:

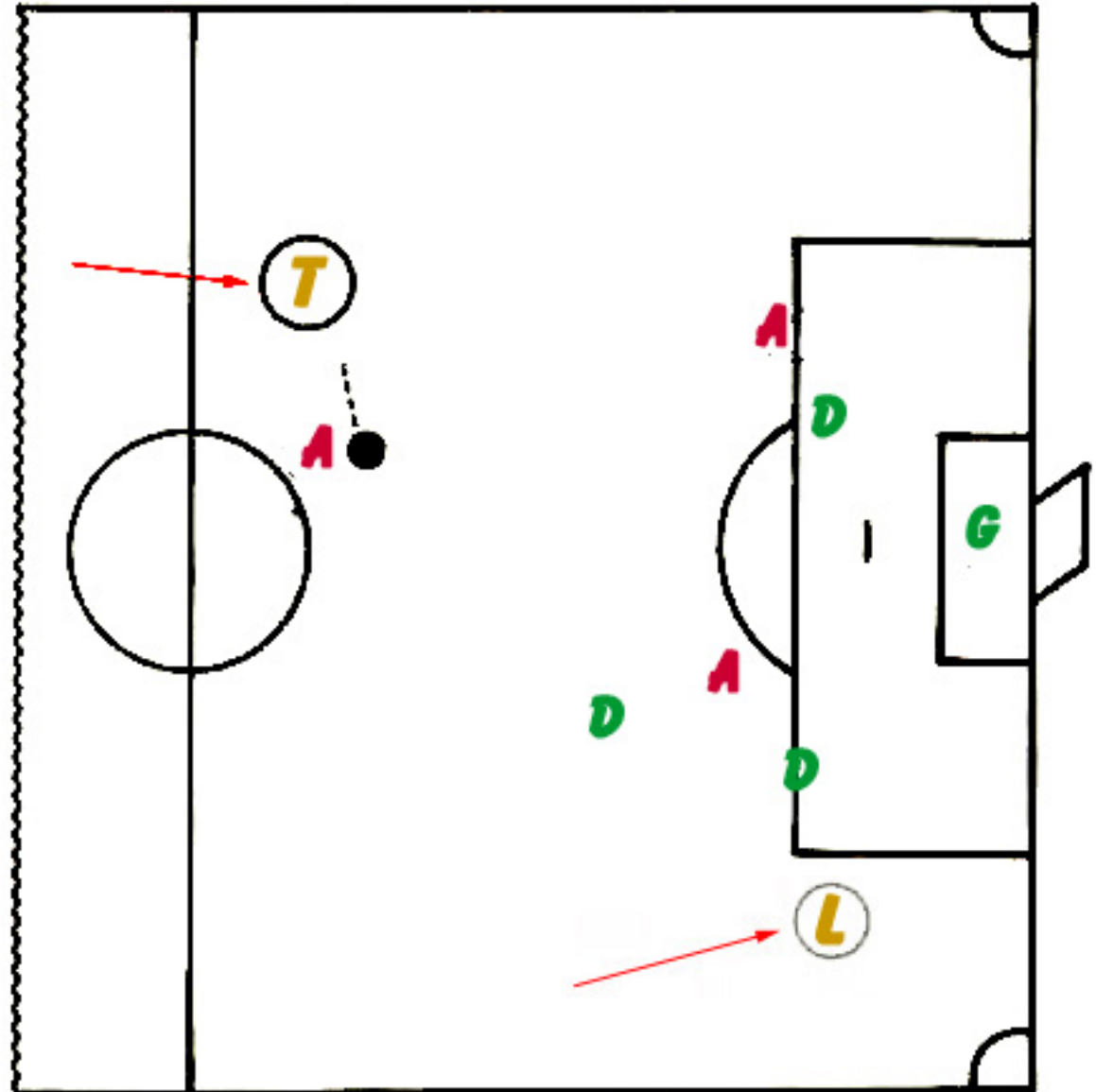
placement
encroachment
delays

(Restart whistle when ceremonial. Ensure Lead is in position.)

Lead referee:

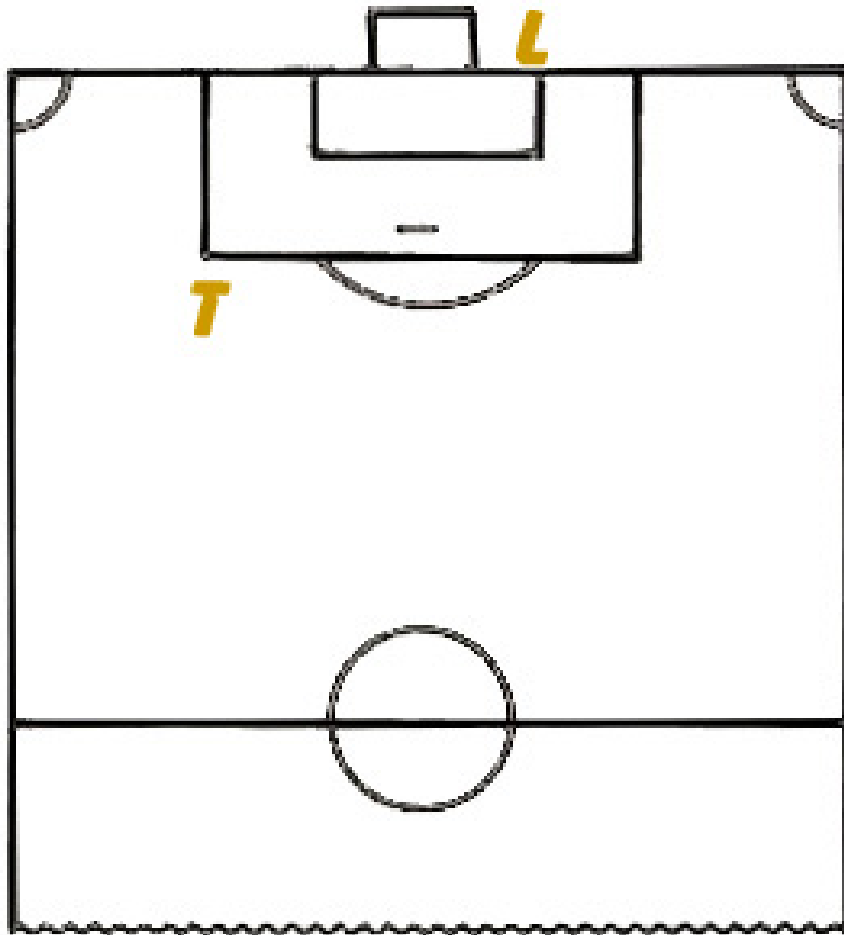
Moves ahead for
Play/goal coverage

(Eye contact or repeat DKF/IFK signal to show readiness.)

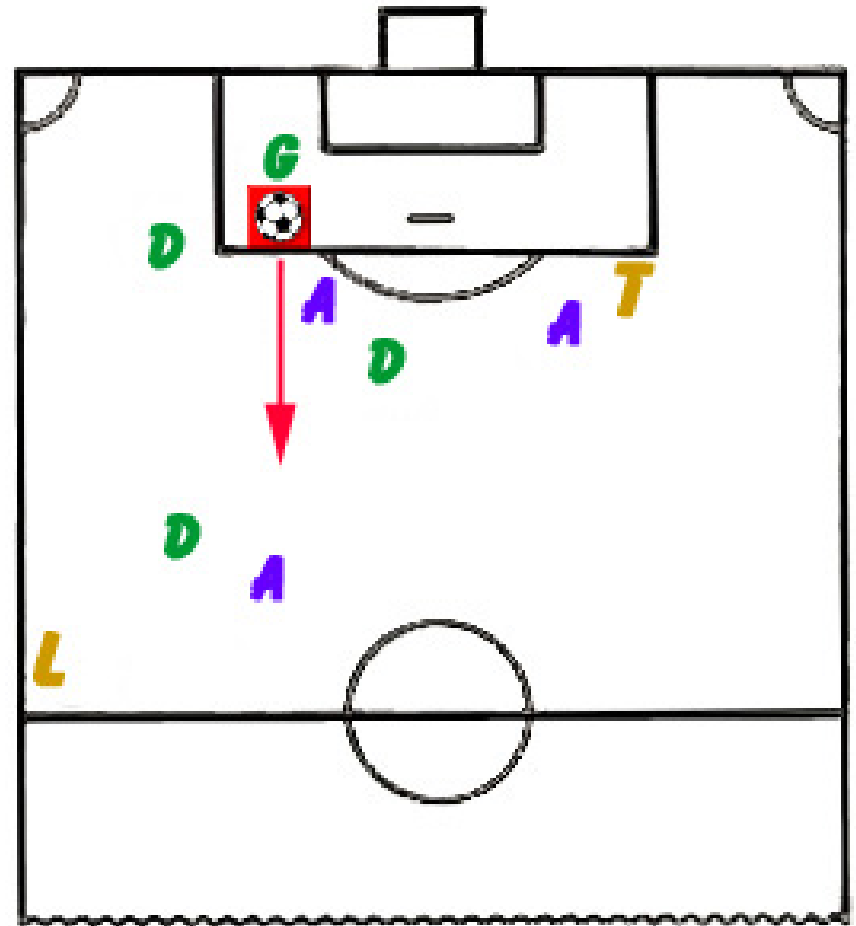


A quick restart will be a positioning challenge

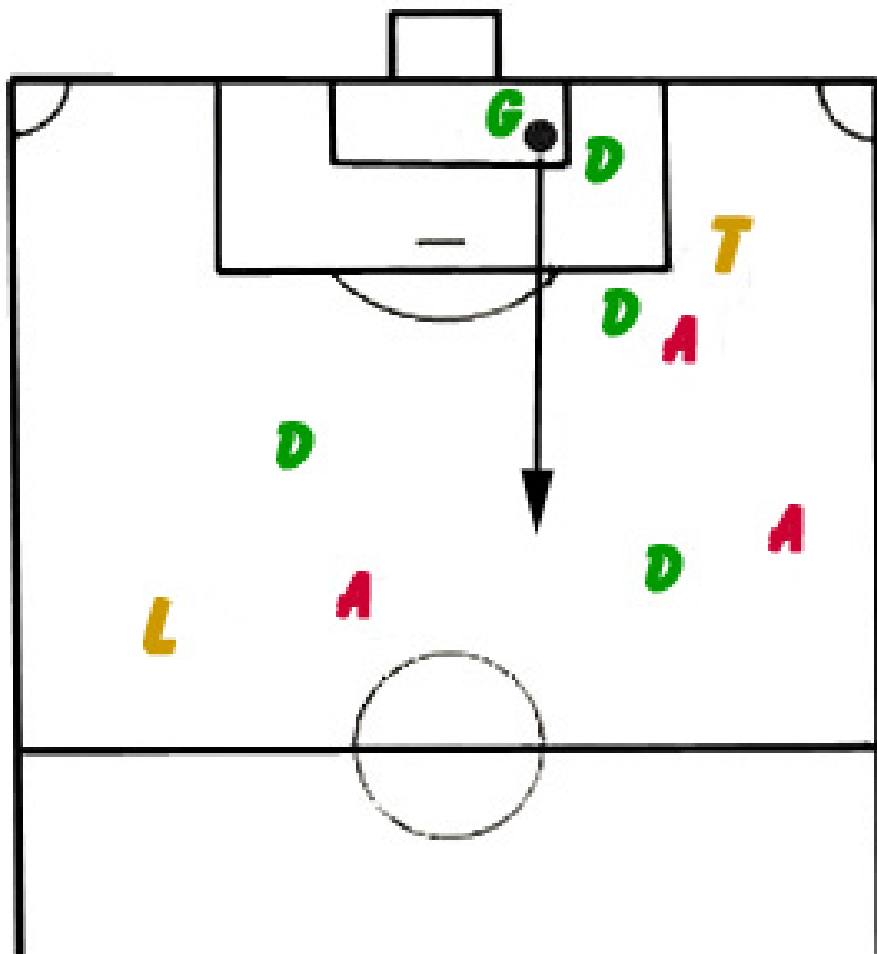
Corner Kick



Goalkeeper Clearance



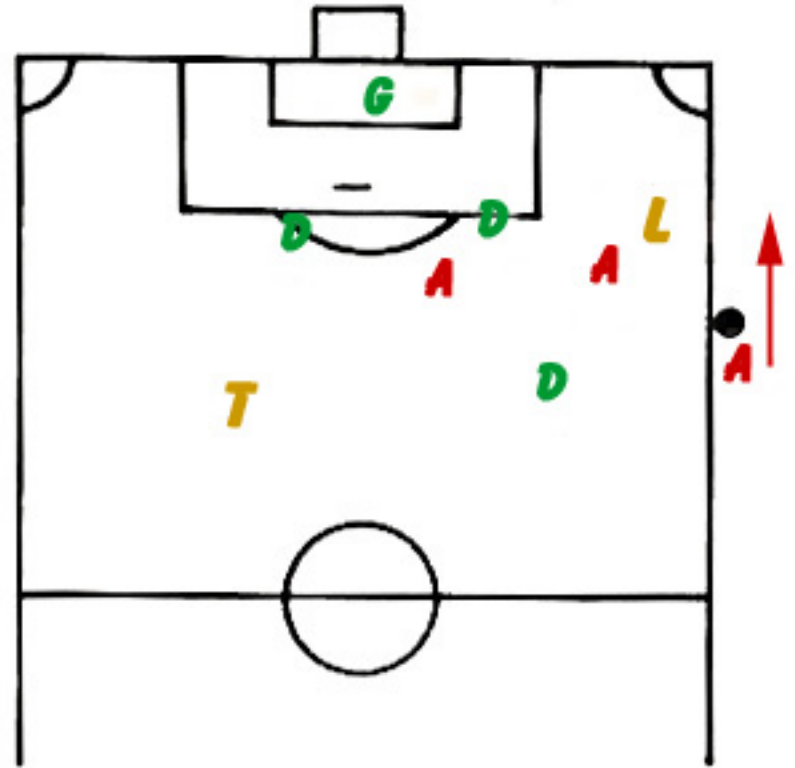
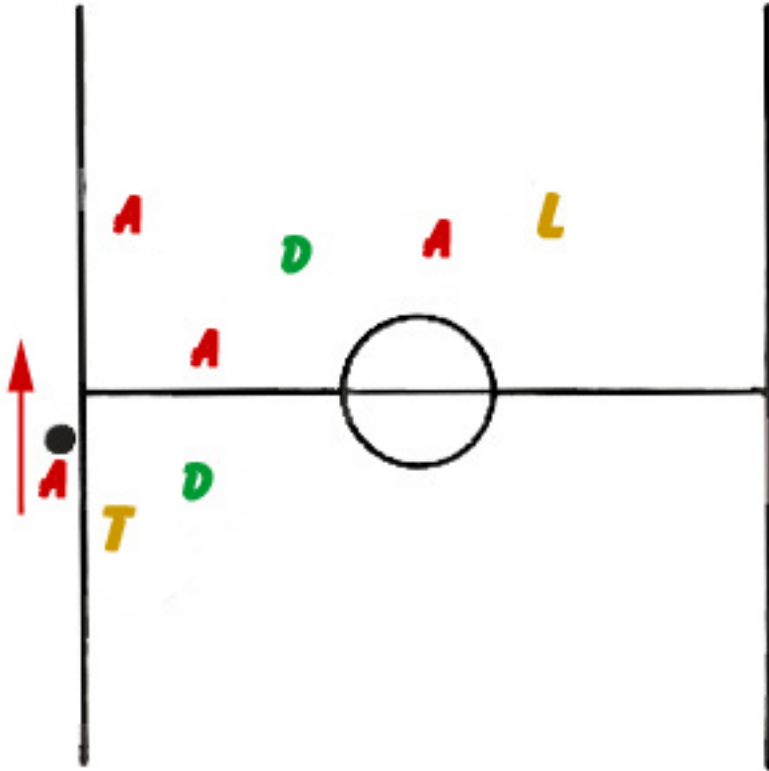
Goal Kick

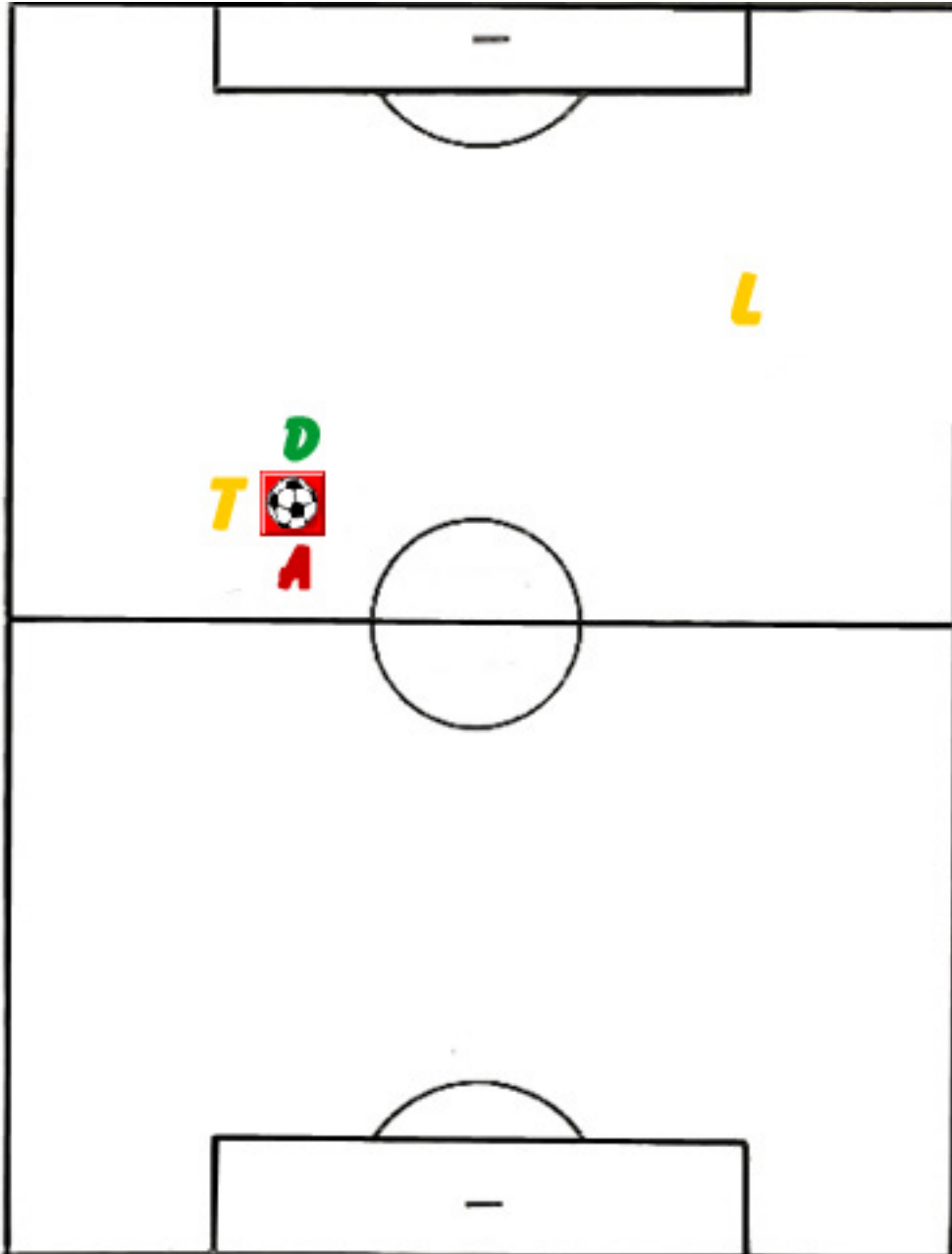


Penalty kick



Throw In





Dropped Ball

Trail official controls drop ball

Lead official anticipates play

Direction of play could change quickly

Officials need to be ready to adjust quickly

(NFHS Rules seem to indicate that there is a Restart whistle on Dropped balls??? Don't!)

Set Positions - Discussion? Questions?

Start of Play

During play

Free kick

Corner kick

Goalkeeper clearances

Goal kick

Penalty kick

Throw in

Drop ball



**Remember “Dual in
Dual System”**

is NOT spelled “duel”

***As always, teamwork is the
key to success.***